

# The Link

## Materials Exchange Program

A Quarterly Materials Exchange Newsletter Spring 2005

### Board of Directors

GEORGE ACKER  
Ogallala

CINDY ADKINS  
Cozad

ROGER BEHRNS  
Louisville

MATT BOERKIRCHER  
Kearney

KURT BOGNER  
Norfolk

CHERYL GERKINS  
Lincoln

JIM GOEKE  
North Platte

DENNIS GRAMS  
Lincoln

PATTY GREENE  
Plattsmouth

JOHN KINTER  
Columbus

BETH ANN KERNES KRAUSE  
Julian

SARA MORRIS  
North Platte

MICHAEL MOSTEK  
Omaha

PAUL O' HARA  
Lincoln

DAVE OSTDIEK  
Gering

JIM OTTO  
Lincoln

PATRICIA OWEN  
Lincoln

MIKE SCHRAD  
Omaha

JEFF SHELTON  
Minden

DICK VARNER  
Omaha

KEVIN WARNEKE  
Omaha

### EX-OFFICIO MEMBERS

DAVE HEINEMAN  
Governor, State of Nebraska

MIKE LINDER  
Director, Dept. of  
Environmental Quality

DAVID STERN, EMERITUS  
Omaha

JANE POLSON  
Executive Director

## GOODWILL GOES ONLINE

For many people, shopping at the local Goodwill store provides an opportunity to purchase used clothing and household items for a reasonable cost. For others, shopping at Goodwill is more like a treasure hunt. These treasure-seekers scour the aisles and cases for a piece of antique jewelry, pottery, or a designer purse.

Recognizing that many donated items have significant value, Goodwill launched an online auction site in 1999 to offer these treasures for bid. The site--[www.shopgoodwill.com](http://www.shopgoodwill.com)-- offers a variety of diverse items including original artwork, wedding dresses, and electronics.

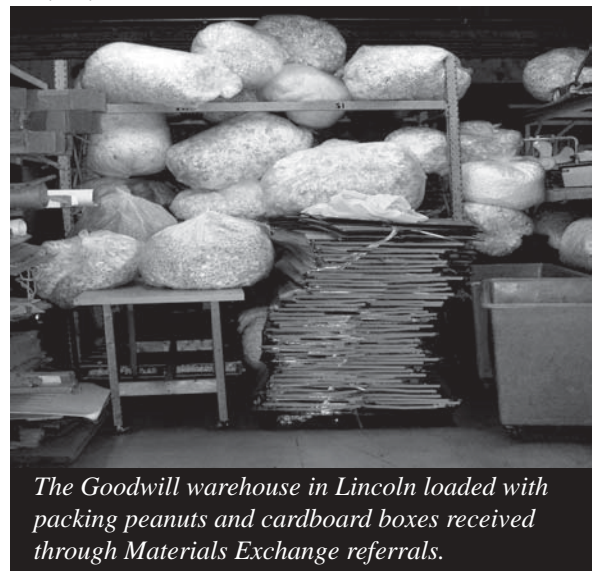
Each Goodwill retail store is responsible for identifying items that might be successfully auctioned on the site. After the auction is over, the individual stores package and ship the item to the winning bidder.

When the Lincoln Goodwill joined the online auction in April 2004, they realized they would need a large amount of boxes and packaging supplies for shipping. That's when the local Goodwill contacted the Materials Exchange for help.

Materials Exchange staff have connected Goodwill to a number of local businesses that have provided packing peanuts, boxes, bubblewrap,

and cardboard tubes. Goodwill staff picks up the supplies on a regular basis, diverting the material from the landfill and reducing the waste disposal costs for the participating businesses.

For Goodwill the free supplies reduce costs so online auction proceeds, over \$64,000 in just one year, can be used to further their mission. Sara Bishop, Communications Director for the Lincoln Goodwill, says, "Thanks to the Materials Exchange program, we do not need to buy boxes or packing material. That means the money we would spend on shipping supplies can be channeled into our employment programs for people that face barriers to employment."



The Goodwill warehouse in Lincoln loaded with packing peanuts and cardboard boxes received through Materials Exchange referrals.

### ACCELERATED TAX BENEFIT FOR CHARITABLE CONTRIBUTIONS

Have you or your company recently donated items to a charity? If so, you may be eligible for an accelerated tax benefit through IRS Section 170(e)(3). This special tax benefit was provided by Congress to encourage donations from companies to nonprofit organizations who serve the ill, needy, or minor children.

To find out more about this tax benefit, talk to your tax advisor or visit the U.S. Internal Revenue Service online at [www.irs.gov](http://www.irs.gov).

Become a Keep Nebraska Beautiful member today! See membership form on page 8.

# 2004 ANOTHER SUCCESSFUL YEAR FOR THE NEBRASKA MATERIALS EXCHANGE

The numbers are in, and they look great! We're happy to report 2004 was another "growth" year for the Nebraska Materials Exchange Program.

Last year, Exchange staff helped businesses find reuse and recycling options for over 16,000,000 pounds of wood waste, computers, drums, metal, etc. Businesses saved almost \$1.2 million in waste disposal costs, hazardous waste disposal fees, and purchase costs for new materials and feedstock.

Compared to the previous year, we increased our diverted tonnage from the landfill by 31% and decreased landfill disposal costs for our participants by 32%. We also welcomed 203 new participants to the program in 2004.

Thanks to all the businesses, schools, service providers, and nonprofit organizations who have made the Nebraska Materials Exchange Program a success since 1994. Here's a brief look at some of the numbers from 2004:

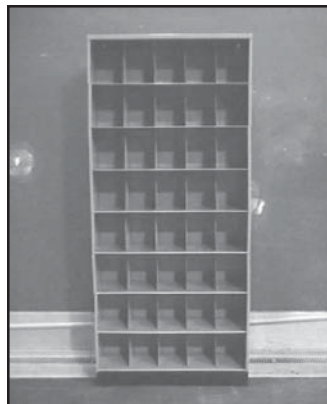
Wood.....	5,905,500#
Plastics.....	4,735,636#
Paper & Cardboard.....	2,706,929#
Ag. Products.....	1,008,000#
Containers & Pallets.....	941,243#
Durables & Electronics.....	276,475#
Surplus Equipment.....	98,194#

## AVAILABLE MATERIALS



**Linc-5147 2/1x**

AJAX-liquid concentrate  
30 gallon containers,  
never opened



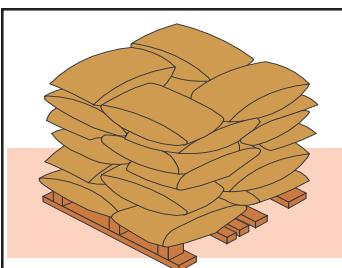
**Linc-5317 100+/1x**

Metal shelves  
85"h x 13"d x 36"w



**Omah-5278 30/1x**

Student chairs-Used  
Preschool-adult size  
Wooden w/ metal bottom



**Kear-5312 1000/1x**

Super Sacks--plastic  
41" x 41"x 43"  
Collapsible, used



**Vall-5254 1 ton/mo**

Horse manure w/  
wood shavings

# Current Listings



To inquire about any items, write Keep Nebraska Beautiful: 3201 Pioneers Blvd., Suite 306, Lincoln, NE 68502-5963; call 1-800-486-4562 (in Lincoln 486-4622); fax (402) 486-4563; or visit our website at: <http://www.knb.org>

Material	Qty.	ID#
<b>Highlighted Items</b> New Items Since Winter 2004 Issue		
<u>Seeking</u>		
Agricultural chemicals	Lg. quantities	BRIN-5319
Air compressor	1/1x	Omah-5347
Aluminum oxide	ns	HILL-5225
Blackboards/dry erase boards	ns	Linc-5230
Board room furniture	ns	Omah-5213
Bricks, concrete block, etc	ns	Linc-5207
Cafeteria trays-plastic	40/1x	DaCi-5222
Cardboard	ns	Milf-5302
Carpet	ns	Omah-5292
Chairs-stackable	ns	Omah-5350
Commercial kitchen equipment	ns	Omah-5235
Construction cut-off, scrap	ns	Wins-5311
Couch-short (loveseat)	1/1x	Linc-5299
Craft materials	ns	Linc-5204
Dinnerware-disposable	ns	Omah-5346
Duplication fluid	600-800 gallons/yr	Omah-5274
Employee lockers	ns	Ohio-5264
Fencing for ball field	ns	Rand-5220
File cabinets	2/1x	Bell-5273
Floor covering	1,500 sq ft/1x	TaRo-5251
Gaylords	ns	Ogal-5257
Golf cart	1/1x	Omah-5349
Gravel, rock	ns	Linc-5208
Greenhouse plastic	ns	Linc-5261
Ladders-8', extension	1/1x	Omah-5352
Laptop computer	1/1x	Omah-5260
Lights & poles for ball field	ns	Rand-5219
Mannequins	ns	TaRo-5250
Microfiche reader/printer	1/1x	Omah-5262
Office dividers	ns	Omah-5293
Office furnishings	ns	Bell-5209
Oven-stacking	1/1x	Omah-5345
Nursery containers-plastic	Sm quantities	Linc-5333
Paper products-envelopes, etc	ns	Linc-5203
Playground equipment	ns	Omah-5279
Plexiglass panels	ns	Omah-5210
Power washer	1/1x	Omah-5348
Printers-color	1/1x	Colu-5212
Roofing materials	ns	Linc-5205
Science equipment	ns	Linc-5232
Shredder-for plastic	1/1x	Omah-5226
Storage shelves	ns	Linc-5298
Super sacks	4,000/1x	Kear-5313
Tool box on wheels	1/1x	Omah-5351
Trash can liners	ns	Omah-5320
TV-large screen	1/1x	DaCi-5223
<u>Generating</u>		
Ajax concentrate	2/1x	Linc-5147

Material	Qty.	ID#
Aquariums	3/1x	Linc-5339
Book jacket cover material	3 rolls/1x	O'Ne-5363
Bottles w/ lids-unused	100+/1x	Linc-5364
Boxes-cardboard, 12x16x12	500/1x	McCo-5253
Bumper auto blocks	12/1x	Linc-5329
Catalogs-outdated	Lg. quantities/1x	Kear-5318
Computer carts	20/1x	O'Ne-5362
Concrete rubble	25 cu yds/1x	DeWi-5325
Horse manure w/ wood chips	1t/wk	Vall-5254
Microfiche reader	1/1x	Linc-5366
Metal shelves for file folders	100+/1x	Linc-5317
Operating room light	1/1x	Linc-5367
Packing foam	1/1x	Linc-5328
Pallets-wooden	ns	Omah-5280
Pallets-wooden	500/ns	Kear-5315
Paneling	6 pcs/1x	Linc-5259
Recorder & power source	1/1x	Linc-5365
Rubber gaskets-used	1 box/1x	Linc-5322
Slats for chain link fencing	300 ft/1x	NoLo-5324
Student chairs	30/1x	Omah-5278
Styrofoam Insulation	9 sheets/1x	Linc-5258
Super sacks	1000/1x	Kear-5312

## Ag Products

### Seeking

Fallen farm & feedlot animals	All	Belv-1052
Fertilizers	Lg. quantities	NERI-4778
Organic products	Lg. quantities	TIIA-3932
Straw bales—square wheat, oat, or rye	ns	Linc-1519

### Generating

Cornstarch	100 t/mo	TIIA-3576
Dry fat products	ns	TIIA-4443
Syrup products	50 t/mo	TIIA-3577
Wet yeast products	ns	TIIA-4444

## Chemicals

### Seeking

Acid	ns	Linc-2439
Antifreeze	10,000#/mo	CSCO-4638
Chemical waste	ns	Omah-3513
Ferric chloride, spent	ns	DPMO-4051
Hazardous materials	ns	Linc-3051

### Generating

10% solution of iodine-povidone	400 gal/1x	TIIA-4889
Chromium hydroxide	1-2 tons/wk	Xxxx-4681

**Please note:** Due to space limitations, the listings in the newsletter are not inclusive. For a complete list of materials being sought or generated by program participants, please go to our website at [www.knb.org](http://www.knb.org) or call us at 402-486-4622.

t=ton	yd=yard	ml=milliliter	semi=semi-truck	cont=container
g=gram	qtr=quarter	wk=week	cu. yd.=cubic yard	1X=one-time amount
L=liter	gd=gaylord	plts=pallets	dmpr=dumpster	ns=amount not specified

Material	Qty.	ID#
<b>Construction Materials</b>		
<i>Seeking</i>		
Asphalt shingle scrap	Lg. quantities	Wave-3950
Concrete block	ns	NoPl-4940
Construction materials-anything usable	ns	Omah-3319
Cabinets	ns	Linc-1517
Fencing-any type	ns	Linc-4619
Rubble-dirt, asphalt, concrete	ns	Linc-3120
<i>Generating</i>		
Cabinet material scrap w/ formica	1 dmpr/mo	GrIs-1253
Drywall scrap	10 plts/mo	GrIs-1249
OSB (wafer board) scrap	3-4 dmpr/mo	GrIs-1251
Particle board scrap	2-3 dmpr/mo	GrIs-1252

Material	Qty.	ID#
<b>Containers &amp; Pallets</b>		
<i>Seeking</i>		
Boxes-cardboard, 16"x16"x12"	Lg. quantities	Suth-2116
Boxes-corrugated	ns	Frem-4232
Crates-Wood	12/mo	Linc-2788
Drums or buckets—plastic, 5 to 55 gal	All	Kear-1102
Drums-30 gal, plastic	10-20/1x	Linc-3468
Drums-20 & 35 gal, plastic	ns	Norf-2732
Drums-55 gal, plastic	ns	Linc-1423
Drums-steel & plastic	All	Omah-1173
Gaylords	ns	Wilc-3747
Pallets	All	BISp-1391
Pallets	All	Tecu-4157
Pallets-various sizes	All	Gret-4532
Pallets-48x48	200/mo	Linc-2789
Polytotes-225 to 345 gal	ns	Omah-3726
Sacks-plastic or paper	ns	Omah-4979
<i>Generating</i>		
Boxes-18"x 18"x 18"	30-40/mo	Omah-1753
Buckets-metal, 2.5 gal, with handle	10/wk	Linc-3308
Buckets-5 gal	24/wk	Omah-2011
Bulk bag-mini	5/wk	Arap-4690
Drums-fiber	200-300/yr	Omah-1751
Drums-55 gal, steel	2/wk	Omah-4476
Drums-55 gal, plastic	4/wk	Omah-4475
Pallets-wooden	100/ns	Indi-5152
Polytotes-225-345 gal	ns	Omah-3726
Super sacks	140/1x	GrIs-4755

Material	Qty.	ID#
<b>Durables &amp; Electronics</b>		
<i>Seeking</i>		
Cell phones-working & non-working	All	Cret-4012
Circuit boards	All	Kear-1101
Computer parts-any	ns	Wave-4107
Computers-working	ns	Colu-5037
Computer-Win95 or better	ns	Stra-4843
Copier	1/1x	Colu-4729
Fax machine	1/1x	Colu-4730
Monitors-computer	ns	Linc-4721
Printers	2-3/1x	Linc-5176
Printer-laser	ns	Omah-5153
Scanner	1/1x	O'Ne-4271
Telephone & computer mainframe equip.-Scrap	All	Kear-1246

Material	Qty.	ID#
<b>Metal</b>		
<i>Seeking</i>		
Aluminum cans	ns	Axte-4653
Aluminum, steel, cans, cars	Lg. quantities	Omah-4144
Brass, copper, aluminum, lead	ns	Norf-1952
Ferrous & nonferrous	All	Omah-1425
Ferrous & nonferrous, copper, brass	ns	Linc-3874
Metal, scrap for recycling	Lg. quantities	Ogal-4283
Solder dross	All	Kear-1273
Tin, aluminum	ns	Frem-4174
Wire-insulated copper & aluminum	All	Kear-1268
<i>Generating</i>		
Aluminum dust	7000-8000#/yr	Davi-3585
Scrap from fireplace installation	ns	Linc-3801

Material	Qty.	ID#
<b>Oils &amp; Waxes</b>		
<i>Seeking</i>		
Grease-used, kitchen	All	Belv-1055
Oil-animal or vegetable	All	Belv-1056
Oil-used	Any quantity	Mina-4593
Wax-food grade	ns	Axte-4001
<b>Other</b>		
<i>Seeking</i>		
Art supplies	ns	Stra-4422
Batteries-from autos, sealed lead/acid	All	Linc-2491
Binoculars	36/1x	Elwo-1410
Bird guides	36/1x	Elwo-1404
Catalytic converters	ns	Kear-1209
Child development materials	ns	Linc-4620
Cleaning supplies	ns	Stra-4420
Construction cones-orange	2-24/1x	NoPl-4378
Drums, any type of percussion instruments	1/1x	Elwo-3869
Equine materials-used bridles, horse blankets, etc.	ns	Kear-3808
Fuel materials w/ high BTU value	25 t/wk	HIMO-3953
Inkjet cartridges-fax, laser, copier	ns	Omah-4178
Mercury barometers	ns	Colu-3109
Software-Adobe Pagemaker	1/1x	Omah-5082
<i>Generating</i>		
Cork scraps	10-20 drms/mo	Yuta-4695
Diatomaceous earth	100 t/mo	Blai-2015
Mercury barometers	ns	GrIs-4955
Steel grain bins	2/1x	Chap-3873

Material	Qty.	ID#
<b>Paint, Glass, Coatings</b>		
<i>Seeking</i>		
Glass-brown	Lg. quantities	Ogal-4282
Glass-recyclable	ns	Blai-2793
Glass-recyclable	Lg. quantities	Omah-3929
<i>Generating</i>		
Lacquer for auto body use	20 gal/1x	Rals-4262
Paint-white	ns	Omah-3591
Powder paint	200#/mo	Kear-2636

**Materials Exchange Disclaimer:** Information provided through this database is supplied by the lister of the material. Keep Nebraska Beautiful is not responsible for any warranty, expressed or implied, as to the accuracy of the material description, the suitability of a particular use, or the saleability of any material offered through this service. It is the legal responsibility of each party to determine whether a listed material is a hazardous waste or a hazardous material. Both hazardous and solid wastes must be managed in accordance with all relevant regulations and laws. Keep Nebraska Beautiful reserves the right not to list a material, to delist a material, or to edit information provided by the listing party.

Material	Qty.	ID#
<b>Paper &amp; Cardboard</b>		

(For Cardboard boxes see: Containers & Pallets)

Seeking

Cardboard	ns	Hend-3012
Cardboard, office pak	ns	Frem-4173
Endrolls-paper for art projects	ns	Linc-4073
Paper & cardboard	ns	Omah-1939

Generating

Acetate paper	50-100/1x	Hick-5142
Books-older	ns	Orle-3648
Cardboard	2 plts/wk	Alli-4609
Cardboard-flattened	ns	Omah-2434
Filter paper	450 t/yr	Kear-4754

**Plastics**

Seeking

#1, #2 plastics	Lg. quantities	Ogal-4281
#1, #2 plastics	ns	Linc-3653
Bubble wrap/packing peanuts	ns	Linc-3833
Carpet pads-polyurethane foam	All	Omah-1623
Moldable plastics	ns	Hast-3999
Plastics-post industrial	Lg. quantities	SJMO-4756
Plastics-recyclables	ns	Frem-4175
Plastics-recyclables	Any	Omah-3930
Plastics	Lg. quantities	LATX-5170
Styrofoam, packing peanuts	ns	PIDa-4057

Generating

Adhesive films	ns	Colu-2334
Polypropylene, polyester	300,000#/yr	Vall-3779
Zip-lock bags-3"x6"	300/mo	Linc-1521

**Rubber**

Seeking

Rubber	Lg. quantities	Omah-3910
Tires & rubber scrap	All	DMIA-4194
Tires-used	ns	Linc-3635

Generating

Cork/rubber scraps	40,000#/mo	NeCi-2416
Crumb rubber-for sale	ns	DMIA-4195
Ground rubber	Lg. quantities	CATA-4954
Rubber product	1t/day	Kear-2238
Scrap-cured & uncured	40,000#/wk	McCo-1283
Tires	ns	Omah-4725
Tires & rubber scrap	90/mo	Sarg-5008

**Sand, Gravel, & Clay**

Seeking

Clay, dirt, sand	ns	Colu-1974
Clay for art projects	ns	Omah-3901
Limestone-small pcs	ns	Linc-4427
Pea gravel	5 t/1x	Linc-4498

Generating

Used glass blasting material	Lg. quantities	Xxxx-3049
------------------------------	----------------	-----------

Material	Qty.	ID#
<b>Surplus Equipment</b>		

(See also Durables & Electronics)

Seeking

Air compressor	ns	CBIA-4737
Appliances	Lg. quantities	Ogal-4284
Athletic supplies & equipment	ns	Stra-4421
Blackboards	ns	Macy-4598
Bunk beds-metal	150/1x	Omah-4972
Cabinets	ns	West-4618
Camera-35mm	1/1x	Omah-5155
Carousel projector	1/1x	Xxxx-3033
Carts-restaurant style	1/1x	Linc-4716
Cash register	1/1x	Stam-5148
Chairs-student, large	ns	Harr-4201
Clothing racks	ns	Omah-4821
Computer tables/carts	ns	Hend-4592
Cooler/refrigerator w/ glass door	1/1x	Vale-4887
Cubicles	20 pcs/1x	Linc-5089
Custodial or maintenance items	ns	Linc-5184
Desks-student	ns	Murd-5167
Desks-adult	ns	Linc-5183
Display cases-small	ns	Omah-4935
Dry erase boards	ns	Linc-5177
File cabinets	1-2/1x	Spal-4825
File folders-hanging	ns	Gerl-5030
Folding tables	ns	Omah-5092
Furniture	ns	StPa-4977
Gardening supplies	ns	Omah-4804
Glass showcases	2/1x	SteI-4926
Hospital equipment-used	ns	Omah-4106
Household supplies	ns	Kear-5174
LCD projector	1/1x	Ogal-4387
Lockers for schools	ns	Wyno-4164
Mannequins	10-20/1x	Auro-4824
Medical equipment, used	ns	Norf-4185
Molding machine-plastic injection	1/1x	Hast-4125
Office chair-adjustable	1/1x	Itha-5181
Office chairs	ns	Linc-5182
Office cubicles	ns	Omah-5056
Overhead projector	1/1x	Omah-5155
Pallet racks	ns	NoPl-4953
Paper folding machine	1/1x	Linc-4639
Pillows	100-200/Ongoing	Omah-4994
Plastic injection mold bases	1/1x	Hast-4127
Podiums	ns	Linc-5186
School supplies	ns	Omah-4803
Shelving	ns	NoPl-5157
Shelving-utility storage	ns/1x	Linc-5014
Shop tools	ns	Wins-4494
Slide projector	1/1x	Spal-4156
Stage curtains	1/1x	Spal-5160
Stools-chair type	ns	Linc-5187
Welding equipment	ns	Wins-4493

Generating

Ag Tronics feed mill	1/1x	TIIA-5164
F700 Ford Louisville Truck	1/1x	TIIA-5165
Baler-for cardboard	1/1x	Belv-4538
Fan coil, heat coil unit	1/1x	Gerl-4573
Fixtures & bulbs	600-660/1x	Xxxx-5168
Hog feeders-wooden shed type	1 ea.	CeBl-3498
Medicine chests	5/1x	Gerl-4574
Mini blinds-beige	16/1x	Clar-4432
Molding machine-plastic injection mold bases	1/1x	McCo-4245

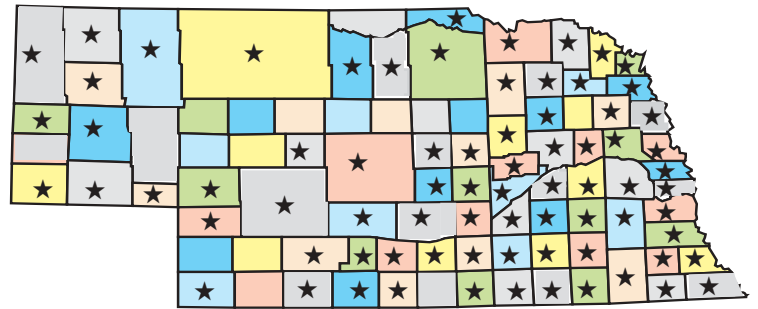
Continued on page 6...

**Please note:** The Nebraska Materials Exchange provides information about current listings. We do not physically take possession of any items. Transportation details and monetary compensation (if any) for listed items is the responsibility of interested parties.

# The Nebraska Materials Exchange Program Wants You!

Currently 76 counties in Nebraska are involved with the Materials Exchange Program. Participating counties are denoted by stars on the map at right. Exchange representatives would like to have **ALL** counties in Nebraska actively participating in the program.

If you or someone you know hasn't joined yet, the Materials Exchange Program wants you! Call 800-486-4562 (or in Lincoln call 486-4622.)



## #ID Codes

### Panhandle

Alli- Alliance	Geri- Gering	Morr- Morrill
Baya- Bayard	Harr- Harrison	Rush- Rushville
Bridg- Bridgeport	Kimb- Kimball	Scot- Scottsbluff
Chad- Chadron	Mina- Minatare	Sidn- Sidney
Craw- Crawford	Mitc- Mitchell	Whit- Whiteclay

### West Central

Ains- Ainsworth	Elwo- Elwood	Maxw- Maxwell
Arap- Arapahoe	Gran- Grant	McCo- McCook
Bart- Bartley	Indi- Indianola	NoPl- North Platte
Bass- Bassett	John- Johnstown	Ogal- Ogallala
Benk- Benkelman	Lemo- Lemoyne	Paxt- Paxton
Brok- Broken Bow	Lexi- Lexington	Stap- Stapleton
Brul- Brule	LoPi- Long Pine	Suth- Sutherland
Cozd- Cozad	Mayw- Maywood	Vale- Valentine
Edis- Edison		

### Northeast

Albi- Albion	Hoop- Hooper	O'Ne- O'Neill
Alle- Allen	Hump- Humphrey	Pend- Pender
Arli- Arlington	Kenn- Kennard	Plai- Plainview
Beem- Beemer	Laur- Laurel	PlCe- Platte Center
Beld- Belden	Leig- Leigh	Schu- Schuyler
Blai- Blair	Lind- Lindsay	Scri- Scribner
Butt- Butte	Lyon- Lyons	SoSc- So. Sioux City
Clar- Clarkson	Macy- Macy	Wake- Wakefield
Colu- Columbus	Madi- Madison	Walt- Walthill
Crof- Crofton	Monr- Monroe	Wash- Washington
DaCi- Dakota City	Neli- Neligh	Waus- Wausa
Dodg- Dodge	Newc- Newcastle	Wayn- Wayne
FtCa- Fort Calhoun	Niob- Niobrara	WePo- West Point
Frem- Fremont	Norf- Norfolk	Winn- Winnebago
Full- Fullerton	Nort- North Bend	Wins- Winside
Geno- Genoa	Osmo- Osmond	Wyno- Wynot
Hart- Hartington		

### Other

Xxxx- Confidential  
Codes with all capital letters refer to cities located outside Nebraska. Please contact a Materials Exchange representative for more information.

### Southeast

Adam- Adams	Firt- Firth	PIDa- Pleasant Dale
Aubu- Auburn	Frie- Friend	Plym- Plymouth
Beat- Beatrice	Gene- Geneva	Prin- Princeton
Bely- Bellevue	Gret- Gretna	Rals- Ralston
Bell- Bellwood	Hebr- Hebron	Raym- Raymond
Benn- Bennet	Holl- Holland	RiCi- Rising City
BISp- Blue Springs	Itha- Ithaca	Roca- Roca
Brow- Brownville	LaPl- LaPlatte	Sewa- Seward
CeBl- Cedar Bluffs	LaVi- LaVista	Shub- Shubert
Cere- Ceresco	Linc- Lincoln	Stei- Steinauer
Cook- Cook	Malc- Malcolm	Ster- Sterling
Cort- Cortland	Mead- Mead	Syra- Syracuse
Cret- Crete	Milf- Milford	TaRo- Table Rock
Davi- David City	Murd- Murdock	Tecu- Tecumseh
Dent- Denton	Murr- Murray	Unad- Unadilla
DeWi- DeWitt	NeCi- Nebraska City	Utic- Utica
Dill- Diller	Ohio- Ohio	Vall- Valley
Doug- Douglas	Omaha- Omaha	Valp- Valparaiso
Eagl- Eagle	Osce- Osceola	Waho- Wahoo
Elmw- Elmwood	Palm- Palmyra	Water- Waterloo
Elkh- Elkhorn	Pana- Panama	Wave- Waverly
Exet- Exeter	Papi- Papillion	Weep- Weeping Water
Fair- Fairbury	PaCi- Pawnee City	West- Weston
Fall- Falls City	Peru- Peru	York- York
Fill- Filley	Plat- Plattsmouth	Yuta- Yutan

### Central

Alda- Alda	Elba- Elba	Orle- Orleans
Alma- Alma	Gibb- Gibbon	Palm- Palmer
Arca- Arcadia	GrIs- Grand Island	Polk- Polk
Auro- Aurora	Harv- Harvard	RedC- Red Cloud
Axte- Axtell	Hast- Hastings	Rose- Roseland
Boel- Boelus	Hend- Henderson	StPa- St. Paul
Blue- Blue Hill	Hold- Holdrege	Sarg- Sargent
Cent- Central City	Kear- Kearney	Shel- Shelton
Chap- Chapman	Loup- Loup City	Spal- Spalding
Coms- Comstock	Marq- Marquette	Stam- Stamford
Dave- Davenport	Mind- Minden	Supe- Superior
Desh- Deshler	NoLo- North Loup	Sutt- Sutton
Doni- Doniphan	Ord- Ord	Wilc- Wilcox

Continued from page 5...

Wall panels	12/1x	Papi-5083
Whiskey kegs	1,000/1x	Omah-5115

## Textiles & Leather

	<u>Seeking</u>	
Fabric/batting for quilts	ns	Linc-4017
Textiles-fabric	ns	StPa-4362
Yarn and thread	Lg. quantities	Omah-3914

	<u>Generating</u>	
Fabric, leather, foam scraps	ns	Linc-3863
Upholstery fabric	500-1000 yds.	Arap-2084
Yarn-industrial	5,000#/mo	McCo-1282

## Wood

(For wood pallets see: Containers & Pallets)

	<u>Seeking</u>	
Salvageable wood	ns	Linc-1518
Wood waste	Lg. quantities	Bell-4766
Wood waste/sawdust	ns	PlCe-4941

	<u>Generating</u>	
Sawdust	2 pu lds/2wks	Yuta-4696
Wood chips & mulch	Lg. quantities	GrIs-3703
Wood mulch	Lg. quantities	Linc-3972

# Nebraska Materials Exchange Program Application

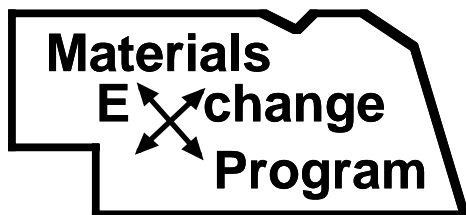
The purpose of this form is to identify any wastes or surplus materials from one business, industry or school that could be utilized by another. The more information you provide, the more likely an exchange will occur. Please type or print. Questions? Call Keep Nebraska Beautiful at 1-800-486-4562. (In Lincoln call 486-4622)

**Company/Organization**

<b>Contact</b>	<b>Date</b>	
<b>Mailing Address</b>		
<b>City</b>	<b>State</b>	<b>ZIP+4</b>
<b>Phone (    )</b>	<b>Fax (    )</b>	
<b>Email Address</b>		

**Note: Please complete all applicable items. If you have more than one item, please copy this form for each material, or attach a list of materials and the quantity of each one.**

1. Is your company/organization a 501(c) 3 nonprofit organization?     Yes     No
2. May we release your name/address/phone to interested parties?     Yes     No
3. Are you SEEKING or GENERATING this material?     Seeking     Generating
4. **Please Specify Material Here:** \*Generic name or primary usable constituent (If plastic, list mfg. & commercial name/grade #):  
 \_\_\_\_\_  
 \_\_\_\_\_
5. **List quantity** (in units: pounds, etc.): \_\_\_\_\_ **Per:** Day    Week    Month    Quarter    Year    1X only
6. **Physical state:** (if applicable)    Liquid    Slurry    Solid    Semi-solid    Sludge    Dust    Cake    Gas    Other \_\_\_\_\_
7. **Packaging:** (circle one)    Bulk    Drums    Dumpsters    Gaylords    Pallets    Bales    Other \_\_\_\_\_
8. **General information as known:** chemical composition, type of plastic, main ingredients, cost, pH, toxicity, reactivity, color, particle size, flash point, total solids, purchase date, industrial process generating this material, contaminants, etc.  
 \_\_\_\_\_  
 \_\_\_\_\_  
 \_\_\_\_\_
9. **Available to interested parties:** (if applicable)     Sample     Lab Analysis     Independent Analysis
10. **Please list any items your company would be willing to donate to schools or nonprofit organizations.**  
 (Working computers, office furniture and equipment, cleaning supplies, etc.)  
 \_\_\_\_\_  
 \_\_\_\_\_



Thank you for your interest in the Nebraska Materials Exchange Program. We will keep in contact with you regarding your application, as well as send our quarterly materials exchange newsletter, *The Link*.

**Please mail or fax this form to:**

Keep Nebraska Beautiful,  
3201 Pioneers Blvd., Suite 306, Lincoln, NE 68502-5963

Fax: (402) 486-4563

Applications can also be submitted via the website at [www.knb.org](http://www.knb.org)



# Do Your Part To Help Keep Nebraska Beautiful! Become A Member Today!

Name \_\_\_\_\_  
 Co./Org. \_\_\_\_\_  
 Mailing Address \_\_\_\_\_  
 City/State/Zip \_\_\_\_\_  
 Phone: (    ) \_\_\_\_\_ Fax: \_\_\_\_\_

\_\_\_\_\_ Sustaining Member .....\$1000+  
 \_\_\_\_\_ Sponsoring Member ..... \$500-999/yr.  
 \_\_\_\_\_ Supporting Member .....\$100-499/yr.  
 \_\_\_\_\_ Chamber of Commerce .....\$50/yr.  
 \_\_\_\_\_ Community-Pop. over 5,000 .....\$100/yr.  
 \_\_\_\_\_ Community-Pop. under 5,000 .....\$50/yr.  
 \_\_\_\_\_ Sr. Citizen/Student ..... \$10/yr.  
 \_\_\_\_\_ Non-profit/Civic Org./School .....\$30/yr.  
 \_\_\_\_\_ Family ..... \$20/yr. or \$45/3 yrs.  
 \_\_\_\_\_ Individual ..... \$15/yr. or \$30/3 yrs.

Your paid membership entitles you to several benefits. Please indicate the benefits you would like to receive below. Items not checked will not be sent and that part of your contribution will be used on educational programs.

- A KNB canvas shopping bag
- Quarterly mailings of the KNB newsletter *Waste Paper*
- Quarterly mailings of *The Link*
  - Via electronic email—address \_\_\_\_\_
- Information on workshops & conferences

### For Sustaining, Sponsoring & Supporting Members Only:

- Corporate member wall plaque (or brass disc for renewals)
- A free copy of Keep America Beautiful's *Waste in the Workplace*

Total amount enclosed \$ \_\_\_\_\_

Send your check and membership form to:

***Keep Nebraska Beautiful***  
***3201 Pioneers Blvd., Suite 306***  
***Lincoln, NE 68502-5963***

*Make Checks Payable to: Keep Nebraska Beautiful*

*The Link* is published quarterly by Keep Nebraska Beautiful, 3201 Pioneers Blvd., Suite 306, Lincoln, NE 68502.  
**Telephone: (402) 486-4562 Fax: (402) 486-4563 Web Site: <http://www.knb.org> Email: [info@knb.org](mailto:info@knb.org)**  
*Funding for this program is provided by the Nebraska Waste Reduction and Recycling Incentive Fund, administered by the Nebraska Department of Environmental Quality, and through memberships and contributions of many of our participants.*



Governor's Council to  
 Keep Nebraska Beautiful  
 3201 Pioneers Blvd., Suite 306  
 Lincoln, NE 68502-5963